

SUPPLEMENTARY MATERIAL TO
**Numerical analysis and field study of the time dependent
exergy–energy of a gas–steam combined cycle**

BAMDAD BARARI^{1*}, ASHKAN ABBASIAN SHIRAZI¹, MOHSEN KESHAVARZI¹
AND IMAN ROSTAMSOWLAT²

¹Mechanical Engineering Department, Shiraz University, Shiraz, Iran and ²Mechanical
Engineering Department, Islamic Azad University, Kazeroon branch, Kazeroon, Iran

J. Serb. Chem. Soc. 77 (7) (2012) 945–957

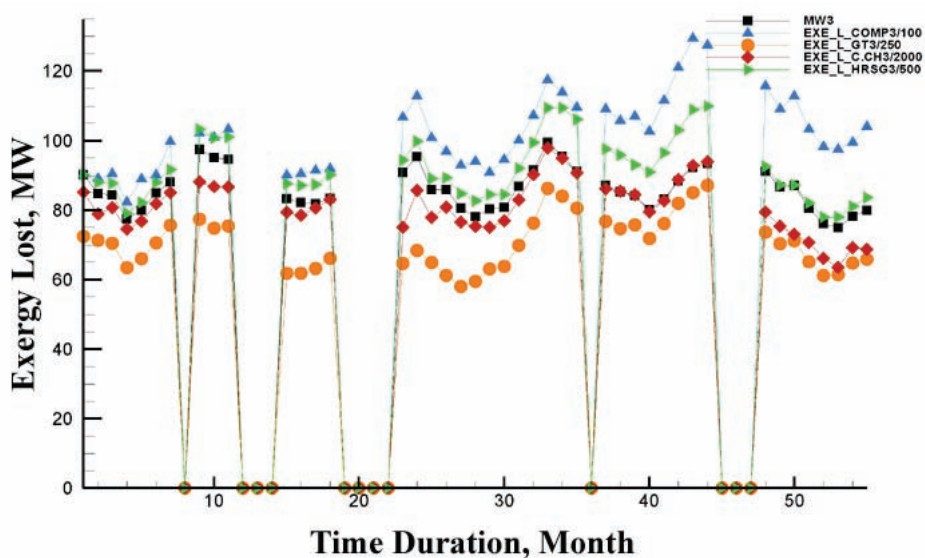


Fig. S1. Power output and exergy loss for different parts of Unit 3.

* Corresponding author. E-mail: barari@shirazu.ac.ir

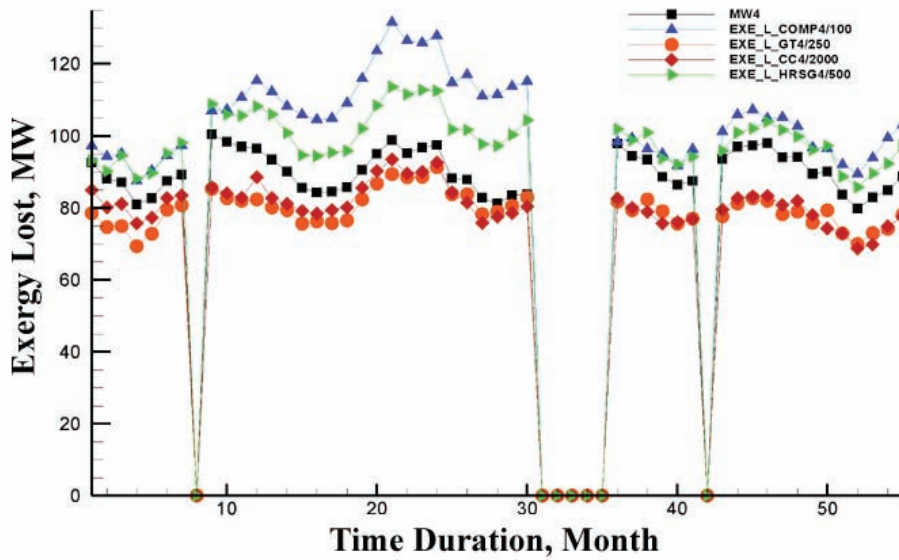


Fig. S2. Power output and exergy loss for different parts of Unit 4.

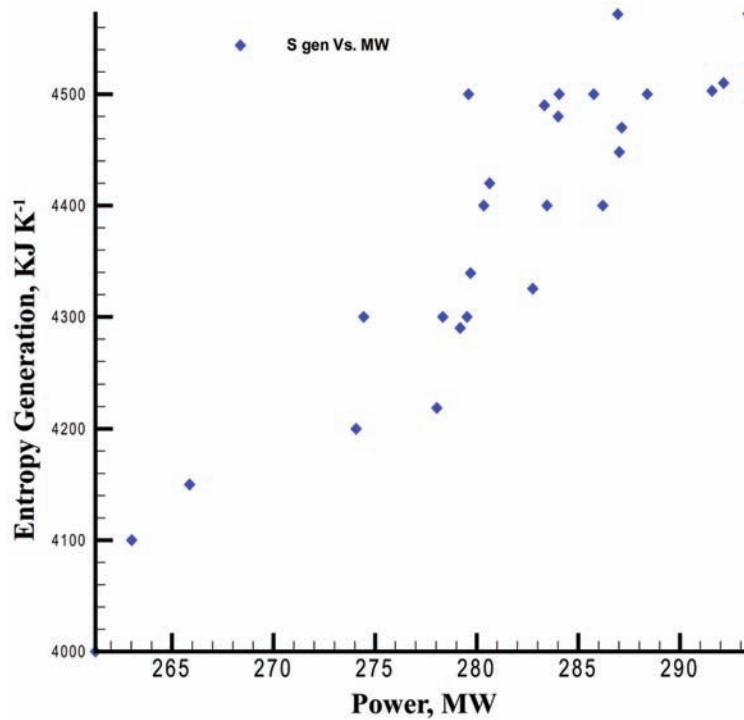


Fig. S3. Entropy generation vs. power output.

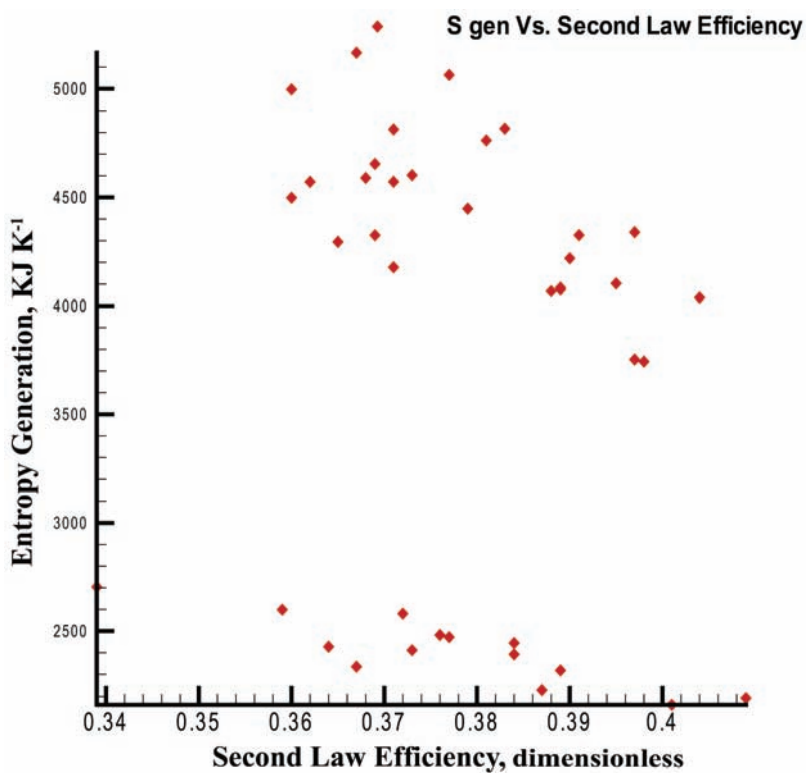


Fig. S4. Entropy generation vs. the Second Law efficiency.

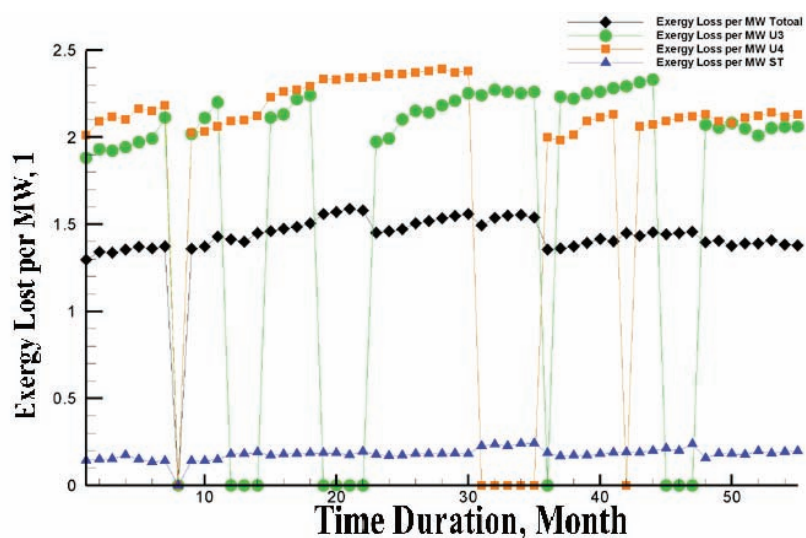


Fig. S5. Exergy losses per MW vs. time duration for the whole cycle, Unit 3 and 4 gas turbines and Unit B steam turbine.

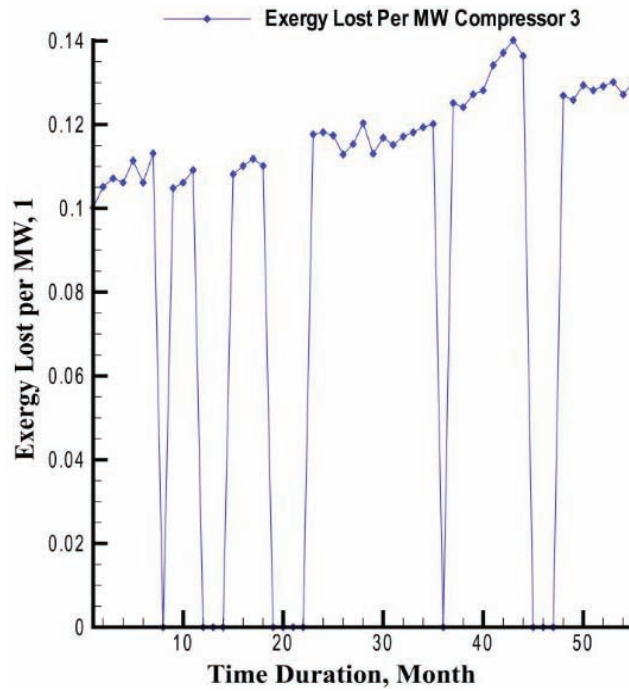


Fig. S6. Exergy losses per MW for the Unit 3 compressor.

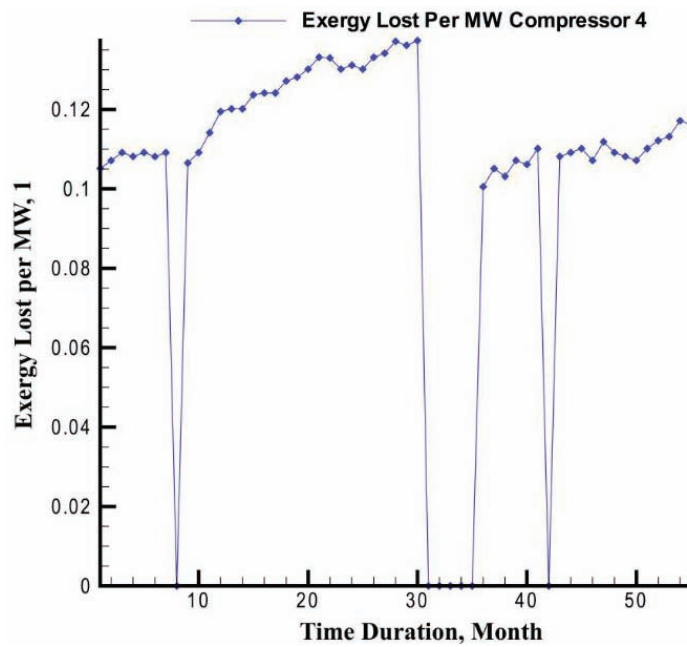


Fig. S7. Exergy losses per MW for the Unit 4 compressor.

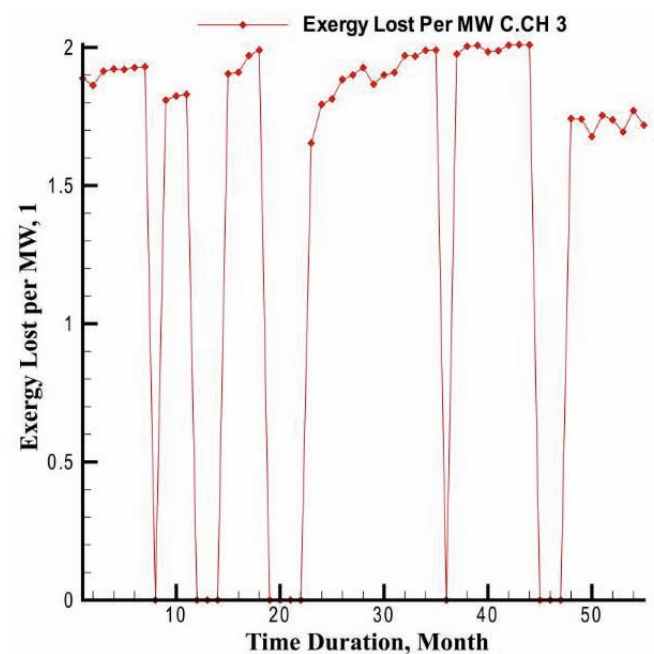


Fig. S8. Exergy losses per MW for the Unit 3 combustion chamber.

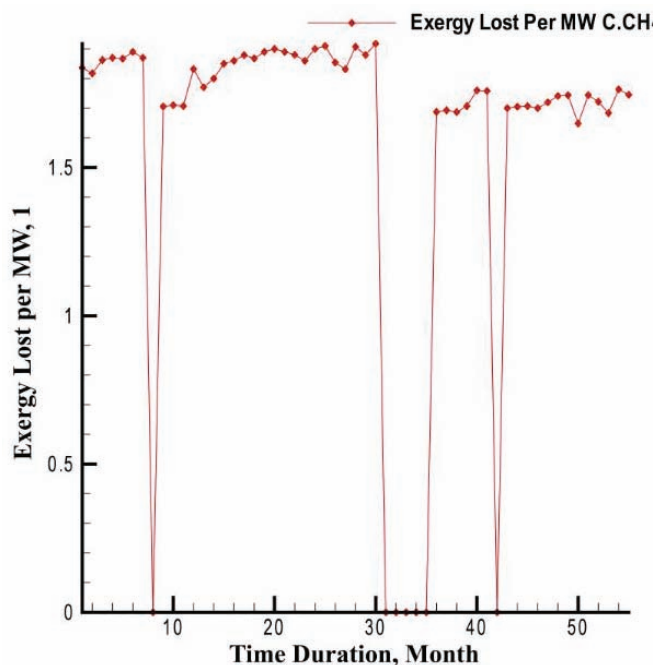
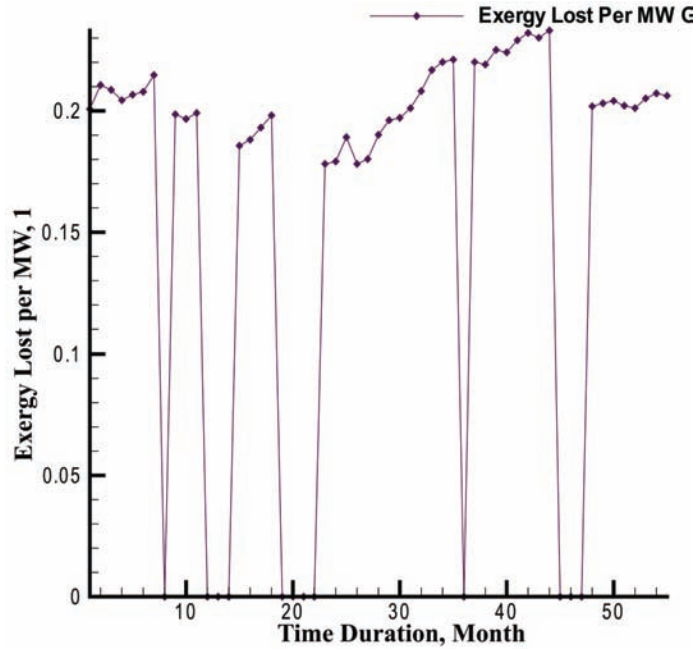
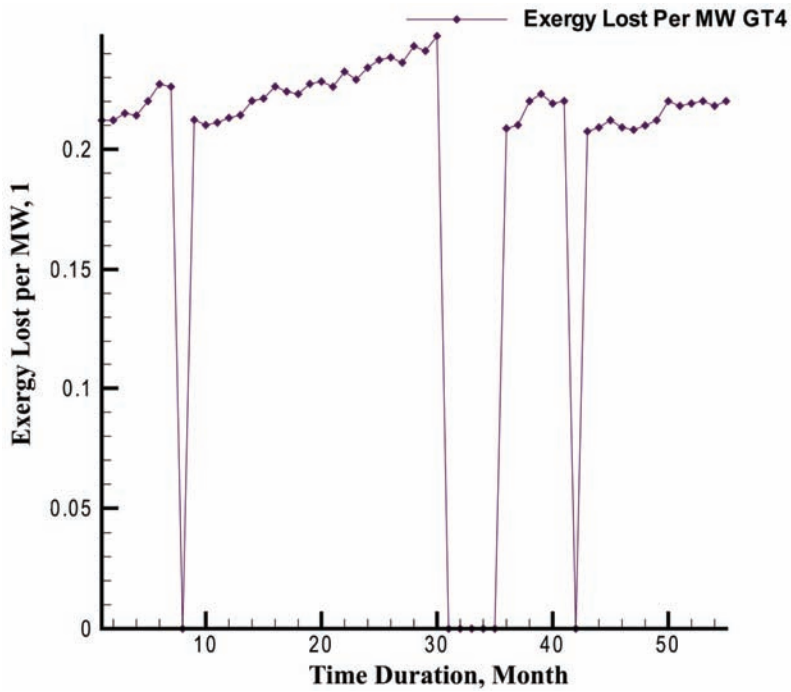


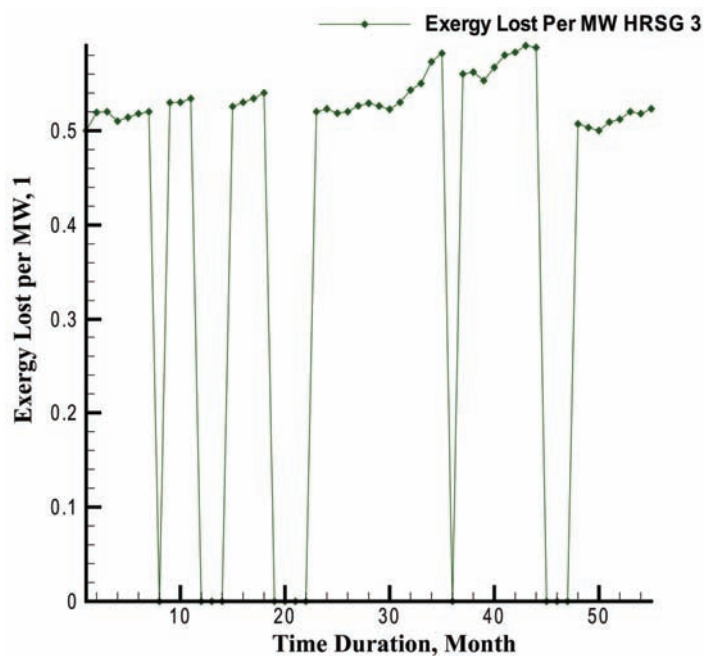
Fig. S9. Exergy losses per MW for the Unit 4 combustion chamber.



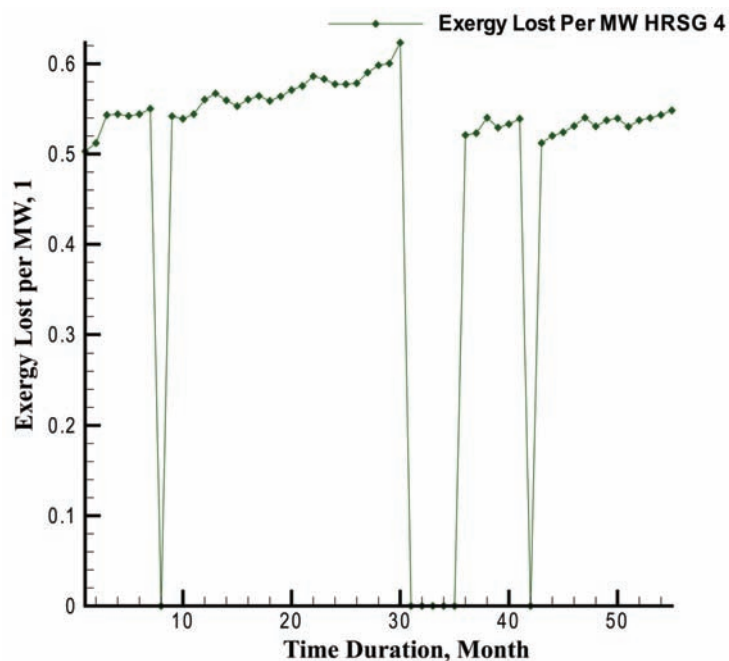
S. 10. Exergy losses per MW for the Unit 3 gas turbine.



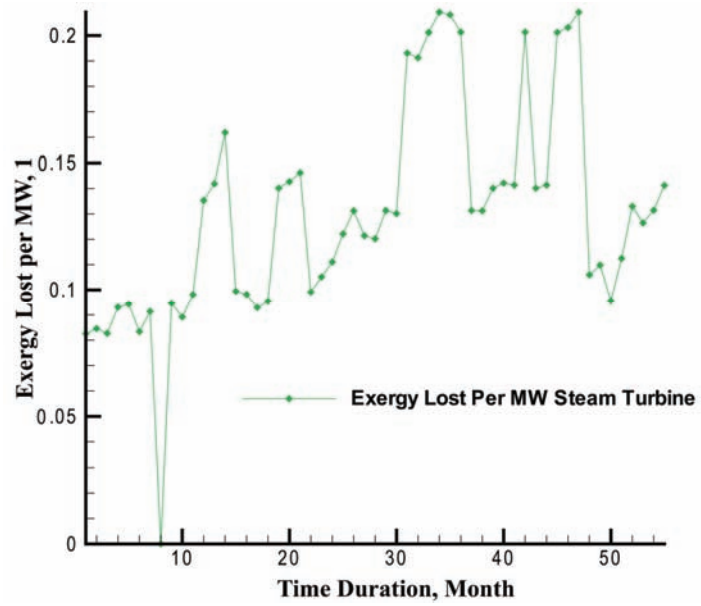
S. 11. Exergy losses per MW for the Unit 4 gas turbine.



S. 12. Exergy losses per MW for the heat recovery steam generator of Unit 3.



S. 13. Exergy losses per MW for the heat recovery steam generator of Unit 4.



S. 14. Exergy losses per MW for the Unit B steam turbine.